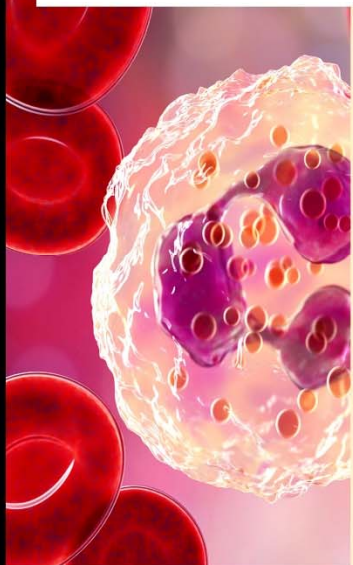


# Care to Test for Health Effects from **your LAST JOB?**

COMPREHENSIVE TESTING FOR  
OCCUPATIONAL EXPOSURES



For more information or to schedule an appointment,  
call: 212.355.7017 or visit our website: [www.BardDiagnostics.com](http://www.BardDiagnostics.com)

# OCCUPATIONAL HEALTH TESTING PROGRAM

For the many Americans who dedicated an extended period of their careers to potentially toxic exposures, this comprehensive clinical testing program offers direct insight into their genetic predispositions for potentially adverse responses to occupational exposures. The selected testing also identifies predisposition to common cancers, chronic diseases, and other health issues. Along with their DNA predisposition profiles, the client also receives personalized guidance about how this gathered information applies to their actual healthcare approach, and proactive strategies they can take to mitigate the impact on their health.



## PHASE 1: GENETIC PREDISPOSITION

There are several sensible phases to this program, the first segment establishes a client's actual genetic blueprint rendering the foundation of a personalized approach to minimizing exposure risks and optimizing health.

- 1) GENETIC TESTING:** Genetic testing and interpretation of inherited mutations for common cancers (including breast, prostate, pancreatic, ovarian, colorectal, stomach, and melanoma) and cardiovascular disease.
- 2) NUTRITIONAL GENOMICS TESTING:** Genomic testing and interpretation of SNPs in many systems underlying health, including the processing of environmental toxins, nutrition, sleep, heart disease, brain health, mood, diabetes, inflammation, oxidative stress, mitochondrial health, hormones, cancers, exercise and injury, bone density.

**3) PHARMACOGENOMIC TESTING:** Genomic testing and interpretation of SNPs in genes associated with medication response, including adverse reactions and effectiveness.

## PHASE 2: BIOLOGICAL & HEALTH IMPACT

The second phase of this program assesses the impact of toxin exposures as they interact with genetic predisposition and affecting the biological systems that support health. Each client also receives personalized guidance and strategies for addressing any ongoing exposures and improving biological functioning and health.

**TOXIN TESTING:** Specialized testing to assess current levels of a wide variety of toxins encountered in the workplace and home environments, with personalized strategies for supporting your internal detoxification systems to reduce their levels and impact.

- 1) EPIGENETIC TESTING:** Epigenetic testing and interpretation to assess how environmental exposures, diet, and lifestyle are interacting with your genetic predispositions, impacting real-time gene expression and health risks including how fast your cells are aging, general cancer and disease risks, immune health, smoking and alcohol exposures.
- 2) FUNCTIONAL LAB TESTING:** Additional specialized lab tests to assess areas identified as potential targets of toxins, directly or indirectly. Personalized to each client, these can include assessments of hormones, mitochondria, oxidative stress, microbiome, stress, sleep and more.



SUPPLEMENTAL:

# DIGITAL DIAGNOSTIC IMAGING



**Advanced 3D Sonogram:  
Non-Invasive Diagnosis of  
WORK RELATED INJURIES**



**TRAUMA**



**DIAGNOSTICS**



**WORK RELATED INJURIES**



**HAZARDOUS EXPOSURE**



## **Subdermal Foreign Bodies**

Splinters, thorns, glass and other fragments under the skin invisible to the observer



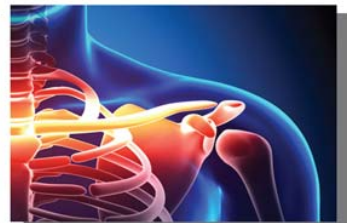
## **Eye Injuries / Inflammation**

Advanced & accurate evaluation of eye damage through closed or swollen eyelid



## **Collapsed Lung & Fluids**

Diagnosis of abnormal collection of air / fluid in the lung tissue or the chest wall



## **Advanced Fracture Detection**

X-rays miss 90% of fractures in the rib, collar bone, wrist, finger and other rounded bones